

Brand Book



Quick Hub No Hub Couplings



MI-QHUB/MI-QXHUB
Sizes: 1 ½" - 15"
Material:
 Type 304 AISI Stainless Steel
 Neoprene Gasket

Specifications:

Fastest installation on the market - fits easily and effortlessly onto pipe and fittings. No need to roll gasket, remove shield or waste time fumbling with a loose shield. The patented hourglass shape ensures the gasket remains within the shield during shipping and handling and allows the Quick Hub to be easily pushed onto the pipe. With the ASTM C1460 Certification, 1 ½" through to and including 8" Quick Hub couplings can be used as transition couplings connecting PVC pipe to cast iron pipe.

Quick Facts

Faster installation: No need to remove gasket from shield.

Torque Requirements: Same torque requirements as traditional couplings.

Field Tested: Installed on high-rise commercial buildings. Tested to perform on min/max pipe diameters.

Neoprene Gasket: Tested and certified to ASTM C564.

Certifications

- ✓ ASTM C1277(MI-QHUB)
- ✓ C1540(MI-QXHUB)
- ✓ ASTM C1460(Transition)
- ✓ NSF
- ✓ CSA B70
- ✓ CSA B602
- ✓ CISPI 310
- ✓ IAPMO tested to FM 1680 (MI-QXHUB)



Pressure Drop Activated Trap Seal Primer



MR-500, M1-500, M2-500,
M3-500,
Material:
Low Lead Brass

Specifications:

MIFAB's M-500 Series of pressure drop activated trap seal primers can be connected to any cold water line, and will be automatically activated when a valve or faucet, that is on the line, is opened. Their unique design permits filter replacement without affecting the performance of the primer. The "O" ring seals are tested at a temperature range of -40 degrees to 450 degrees F. The M3-500 is ideal for installation in areas that have low water flow and pressure drop. The adjustment screw on the exterior can be adjusted to attain the desired water discharge regardless of the low water flow and pressure drop.

Quick Facts

3 Pressure Drop: Only a 3 psi line pressure drop required to activate the primer, compared to 5-10 psi by others.

No Precharge: Can be disassembled in the field for easy cleaning and repair, without risk of losing a precharge.

4 View Holes: There are four view holes for easy inspection of water delivery. Light illuminates through the four holes to see the performance of the primer.

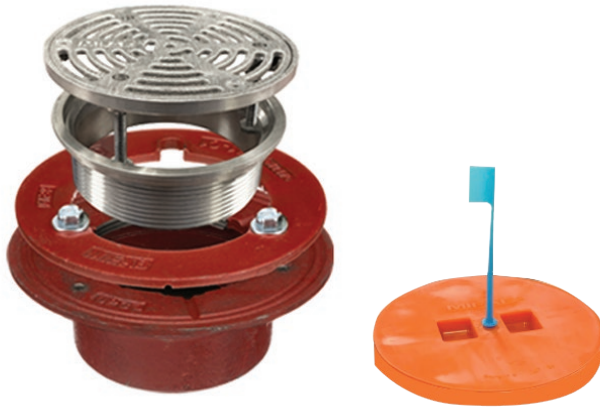
Replacement stainless steel sediment filter prevents line debris from enter primer.

Certifications

- ✓ ASSE 1018
- ✓ IAPMO
- ✓ CSA B70



Top Set Finished Floor Drain



F1100-C-TS

Sizes: 5" and 6" round tops

Material:

Type 304 Stainless Steel,
Nickel Bronze

Specifications:

The patent pending MIFAB Top Set® finished floor drain ships complete with a ½" thick plastic cover and whisker to protect the strainer during the concrete pour. The installer pours the concrete to the top level of the plastic cap. Channel locks are used to remove the cover after the concrete pour has settled. A Phillips head screwdriver can be used to engage the three screws located underneath the finished grate. Turn the screws the same amount to elevate the strainer up to the finished floor level. Turn the screws a different amount each to tilt the strainer to the same angle as the finished floor.

Quick Facts

Plastic cap provided as standard to protect strainer during construction.

Identifying whisker included to locate drain after concrete pour.

No need to tape over / clean off strainers.

No shims needed. Side to side adjustment provided with three integral leveling screws.

Up to 1" vertical adjustment after pour to match floor finish.

Everything included within the Top Set Strainer. No need to add any parts.

Advantages of the Top Set®

Plastic cover protects the grate during the concrete pour.

Adjustment after the pour is easy - no need to waste time to find the finished floor strainer - it is already included in the Top Set® floor drain assembly.

Ability to tilt the strainer to match the uneven finished floor level.

Transition Coupling



MI-TR
Sizes: 2"-4"
Material:
Durable PVC

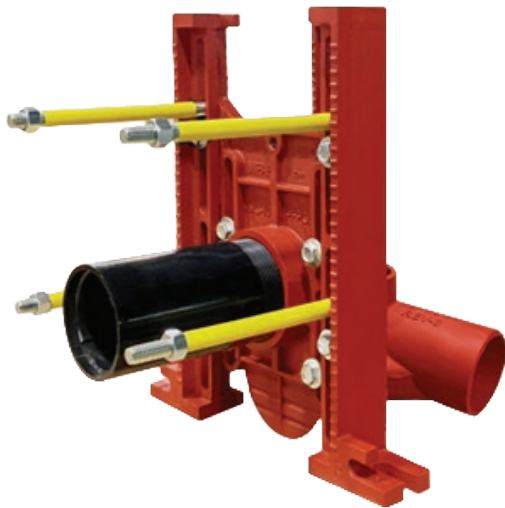
Specifications:

Ideal for below ground to above ground PVC pipe connections. The bottom of the MI-TR has either a 2", 3", or 4" PVC socket connection and the inside of the top of the MI-TR also has either a 2", 3", or 4" PVC socket connection. The MI-TR is placed over the PVC pipe. The included orange cover will seal the top. An identifying whisker sticking up from the top of the orange cap provides location identification after the concrete pour covers the orange cover.

Channel lock guides in the top of the orange cover (protected by a sticker) provide a means for the contractor to use channel locks to remove the cover after the concrete poured over the cover is removed. Once the orange cover is removed, one can socket weld a PVC pipe through the top of the MI-TR to complete the under ground PVC pipe to above ground PVC pipe connection.

Another application for the MI-TR is for floor mounted toilets. Without the MI-TR, one typically creates a foam void around the top of the 4" PVC waste pipe to leave room for the PVC hub closet flange to glue around the pipe and also tape the top opening of the pipe or use a pipe cap. Then, the concrete is paved over. The plumber then has to find the pipe covered by the concrete and break up a large area of concrete around the pipe, remove the foam and install a 4" hub connection PVC closet flange around and over the 4" PVC waste pipe. With the MI-TR, one socket glues the fitting around and over the 4" PVC drain pipe and then pours the concrete around it. There is no need for a foam void as the spigot PVC closet flange will glue into the top of the MI-TR.

MC-10 Water Closet Carrier



MC-10L (Left)
MC-10R (Right)
Material:
Cast Iron

Specifications:

The MC-10 series is a horizontal, adjustable, water closet carrier with lacquered cast iron fitting, 4" (102) no hub waste, 2" (51) no hub vent connection, lacquered cast iron gasketed adjustable faceplate, universal floor mounted cast iron foot supports, adjustable 8" tapered thread ABS nipple with integral test cap, neoprene bowl gasket, hardware, threaded rod protectors, polished chrome plated finishing cap nuts and rear anchor tie down support.

Quick Facts

Universal: Same faceplate used for both siphon jet and blow-out toilets

Accessible: Outside flange of legs removed to provide unencumbered access when using a Roto Hammer to secure the lag bolts into the ground.

Narrow Legs: 2 ¾" legs for narrow installations.

Pre-Fab Anchor Slot: Slot is 1" from the bottom to bolt to the 1 ½" angle iron for pre-fab battery transport.

Quick Install: Bolts connect legs to the faceplate from the front and all bolts have a built-in washer design.

Flush Valve Support: ½" tappings on top of legs to accept threaded rod and stand off clamp set at 4 ¾" to centerline of nipple. Flush valve stub out connects to this.

Rod Protectors: Rod protectors come pre-assembled onto studs to prevent mortar from affecting threads with backup nut already assembled onto rods.

Easy to Use: Faceplate has easy to break off tabs set at common heights.

Secure Nipple: Tapered thread nipple inserted into faceplate with o-ring secondary seal. No need to remove the nipple from the faceplate after the water test to cut. Other brands have a flare at the end of their nipple - requiring their nipples to be removed after the water test to cut the finished wall heights.

HDPE Interceptors



BIG-1150 illustrated

**LIL-MAX, BIG-MAX,
SUPER-MAX**
Material: HDPE plastic
Available for:

- Fish
- Fur
- Grease
- Lint
- Oil
- Plaster
- Rice
- Sand
- Solids

Specifications

MIFAB® HDPE rotational molded interceptors. Units shall include: 3/8" uniform wall thickness, deep seal trap covered by lid, internal air relief by-pass, adjustable lid system, stainless steel calibrated orifice plate (internal flow control), sample port access and 4" no hub inlet and outlet connections. Steel encased composite lid provides a water / gas tight seal and has a minimum of 20,000 lbs. load capacity.

Quick Facts

HDPE Material: High Density (HDPE) 3/8" rotationally molded material is used in every interceptor. HDPE is less brittle than fiberglass and less likely to crack during installation. HDPE interceptors are better for the environment. Both fiberglass and concrete interceptors have a negative impact on the environment.

Lightweight: HDPE weighs less than concrete and steel.

Hydromechanical: More efficient grease separation than gravity interceptors.

Economical: Generic ADS pipe used for risers / extensions instead of proprietary and more expensive risers from others.

Certifications

- ✓ ASME A112.14.3
- ✓ CSA B481
- ✓ IAPMO
- ✓ PDI-G101



T1400, T2000 and T3000 trench drains



T1400, T2000, T3000
4", 8" and 12" internal widths
39.37" long
Material: Glass-Fiber
Reinforced Polyester (GRP)

Specifications

Channels are 39.4" (1000 m) long with either 4", 8" or 12" internal widths and radius bottom. Interconnecting channel sections are made of high strength Glass Fiber Reinforced Polyester (GRP) and available in sloping (0.5%) and non-sloping (neutral) channels. Each channel comes with no edge rail, galvanized edge rail or stainless steel edge rails. Directional Change Channels available at neutral locations.

Quick Facts

GRP Material: Lightweight channels weigh 75% less than Polymer Concrete equivalents.

Load Rating: Class of A-E (135,000 lb. {600 Kn}).

Rails: Galvanized Steel, Stainless Steel or No Edge rails. Rails are molded into top of channels for sturdy design.

Operating Temperature: 212° operating temperature range.

Significantly lower shipping costs and less breakage than polymer concrete.

Shallow Depth channels available in 4" and 8" internal widths.

Variety of Grates: Interchangeable grates across materials. Grates range from plastic, stainless steel mesh, ductile iron and galvanized steel.

Installation Devices: Two installation devices are provided with every channel. These devices are placed onto the rebar / all thread and then the channels are installed onto the devices for fast and level installations.

MC-41 Concealed Arm Lavatory Carrier



MC-41
Material:
Ductile Iron

Specifications

The MC-41 Series floor mounted concealed arm lavatory carrier with lacquered, adjustable, ductile iron concealed support arms. Complete with lacquered cast iron invertible and adjustable arm supporting brackets, adjustable steel nipples with locknut and set screws, alignment rod, two lacquered 2" x 1" x 1/8" thick structural steel uprights with 3" x 4 1/2" welded steel feet and fixture leveling and locking hardware.

Quick Facts

Only one set of universal arms to fit all but long ADA lavs.

Tapping in Header bracket is offset from the upright so that the nipple can thread into the open space.

Header bracket is reversible and can be offset for second adjustment.

Arm can be adjusted into the nipple.

Other manufacturers require different arms for different sink sizes.

Hardware always assembled onto arms with bag around each arm to prevent loose hardware.

All parts in one box. Nothing is shipped loose.



Certifications

✓ A112.6.1M-97
✓ UPC/IPC



HYDROMAX Siphonic Drainage



MH-300, MH-400, MH-500,
MH-600
Material: Cast Iron

Specifications

Siphonic drainage uses the natural height of the building to generate a negative pressure which creates a siphon effect on the roof. Siphonic drains also utilize a baffle plate to eliminate air from entering the system: whereas gravity drains require $\frac{2}{3}$ air mixing with $\frac{1}{3}$ water to function. Because of this, siphonic drainage uses half the pipe diameters that traditional gravity drains use because the entire pipework is full of water- this is the first major cost savings advantage using siphonic drainage. Cost savings also come from smaller fittings, hangers, insulation, and less labor required for installation.

Quick Facts

Siphonic design can dramatically reduce labor and installation costs.

Siphonic storm drainage installs using half the diameter pipe of traditional gravity drainage.

Pipework on a siphonic system runs dead level flat, there is zero pitch.

Siphonic drains will always have less ponding on the roof than traditional gravity drainage.

Certifications

✓ ASME A112.6.9
✓ UPC/IPC



Shift + Lift Universal Water Closet Carrier Offset Kit



MC-10-PN8R-31-SL-50
MC-10-PN8R-31-SL-75
MC-10-PN8R-31-SL-100
1/2", 3/4", 1" offset

Specifications

MIFAB knows how frustrating and expensive it is when the ADA water closet is less than the required 16-18" from the center of the nipple to the finished wall, that is why we created the Shift and Lift. It allows you to offset the fixture without tearing out the wall and carrier. Simply remove the toilet and existing straight nipple and studs, and install the Shift and Lift offset nipple and studs. Re-install the toilet.

Quick Facts

Available in 3 adjustments:

1/2", 3/4" or 1"

The MC-10 is tested with the Shift and Lift offset hardware package to support up to a 500 lb. load with rear anchor support.

Roofguard Roof Dome



RG2016DD

Material:

Polyethylene

Replacement/Retro-kit
roof dome strainer

Specifications

The RG2016DD polyethylene (with UV inhibitor) is a replacement roof dome with an 19" diameter, horizontal slotted, free area drainage design. The Roofguard comes with a 10 year warranty.

Quick Facts

Patented design increases surface area by up to 5x or more making a RoofGuard protected drain virtually uncloggable.

Eliminates leaks and costly repairs caused by clogged drains.

RoofGuard will replace any Roof Drain Dome Strainer up to 15" in diameter.

Installation is fast, simple, and requires no tools.

Removable Top allows easy access to drain and piping without detaching RoofGuard.



Distributed by: MIFAB

Double Check Valve Backflow Preventer



BARRACUDA 20, FDC
Sizes: 2 ½"-8"
Material:
Type 304 Stainless Steel

Specifications:

The Barracuda 20 Double Check Valve Assembly (DC) is designed to prevent non-health hazard pollutants from entering the potable water supply system caused by backpressure and/or backsiphonage conditions. The Barracuda 20 Double Check Valve shall utilize two independent Dual Action Check (DAC) modules contained within a single valve housing constructed of 304 stainless steel. DAC modules shall operate as a "poppet style" check under low flow conditions, operate as a "swing style" check under high flow conditions and utilize replaceable silicone 1015 elastomer sealing discs. The Barracuda has the lightest shortest device with great flow curves at service level. The Ductile Iron FRP Series ½" through 4" lowest cost option for Vertical Up.

Quick Facts

BEECO® has the oldest backflow manufacturer in the world, with its first pattern in 1950.

Barracuda meets by America 51%.

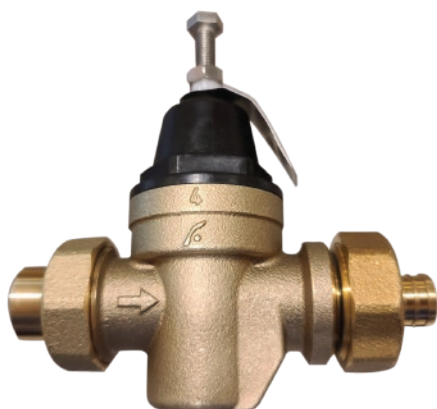
Lowest Cost and easiest devices to repair 20% and ½ the time of most competitors.

Certifications

- ✓ ASSE 1015
- ✓ USC approved (BARRACUDA 20)
- ✓ CSA B64.5 (FDC)
- ✓ IAPMO listed (FDC)



Water Pressure Reducing Valves Compact



PRV-C (small and large)

Sizes: ½"-2"

Material:

ASTM B 584

(copper construction),
Stainless Steel, Elastomer,
Reinforced EPDM,
Engineered Polymer

Specifications:

The Water Pressure Reducing Valve (PRV) was designed to be a compact model with an integral strainer. The PRV has an adjustment screw to allow adjusting the pressure down to 50PSI (345 kPa), and is designed for incoming pressures up to 300 PSI (20.7 bar). The device must have a built in strainer that will stop debris from entering the pressure reducing chamber and is removable for cleaning. The PRV also has Double union for the same price as single union on larger sizes. There are Metal or Polymer cages on small devices, all 1 ¼" through 2" have metal cages standards.

Quick Facts

Competitively prices stainless steel adjusting screw and nut.

Corrosion resistant body and cover.

Internal bypass for thermal expansion.

Certifications

- ✓ LEAD FREE
- ✓ UPC
- ✓ ASSE standard 1003 (ANSI A 112.26.2)
- ✓ IAPMO listed
- ✓ CSA standard B356 certified





Distributed by: MIFAB

Water Heater Shutoff Thermal Expansion Control



MI-CONTROL-LL

Sizes: $\frac{3}{4}$ "

Material:

Bronze

Specifications:

The BEECO MI-CONTROL is designed to be used where a water heater shut-off and thermal expansion relief valve are needed in combination to provide protection for your plumbing system against thermal expansion. The MI-CONTROL will provide thermal expansion relief at a pressure of 5 psi or more below the set pressure of the primary thermal expansion relief valve. The MI-CONTROL replaced both the expansion tank and the shut off valve. All possible drain options are included. The inlet and outlet can be IPS, SWT, PEX, or UP.

Quick Facts

The MI-CONTROL is used with lead free materials.

Only field adjustable device on the market.

Takes $\frac{1}{10}$ of space of an expansion tank.

Certifications

- ✓ LEAD FREE
- ✓ UPC
- ✓ IAPMO IGC 128-2006a certified and listed

